


Icon's Spare Parts Department is a critical part of the business with the sole focus of managing our inventory to make you sure you get what you need, when you need it. Whether manufactured through our local expert machinists, through our CNC machine shop, or via our partners, our technical and customer service teams are here to service your requirements. We can help you ID parts, or can even reverse engineer parts you are having difficulty sourcing.

## QUALITY



Our spare parts are designed to last and are made from the highest quality materials and by highly experienced trades people.



## DELIVERY

Our spare parts are made inhouse, via our key partners, or through our trusted network. With best-in-class ERP inventory management, we get parts to you faster.



## LOCAL

Icon is your local partner to help you manage your parts needs and keep your equipment running. Our local team will ensure you have a great experience.

**More Info:**

[www.iconequip.com.au/spare-parts](http://www.iconequip.com.au/spare-parts)

For more info +61 3 9462 1544 or [spares@iconequip.com.au](mailto:spares@iconequip.com.au)



# Gravity Filler Diaphragms

## Part No: 503-136

Type: 4F  
Duro: 40 Shore A  
Material: Rubber  
Colour: Red



## Part No: 503-140

Type: 4F  
Duro: 40 Shore A  
Material: Silicone  
Colour: Translucent



## Part No: 503-136A

Type: 4FA  
Duro: 50 Shore A  
Material: Silicone  
Colour: Red



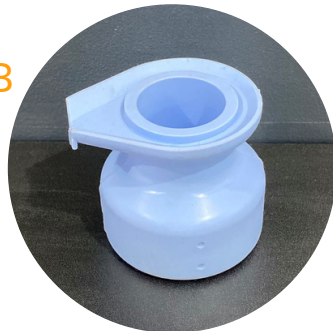
## Part No: 503-140A

Type: 4FA  
Duro: 40 Shore A  
Material: Silicone  
Colour: Translucent



## Part No: 503-140A-B

Type: 4FA  
Duro: 40 Shore A  
Material: Silicone  
Colour: Blue



## Part No: 503-140A-G

Type: 4FA  
Duro: 40 Shore A  
Material: Silicone  
Colour: Green



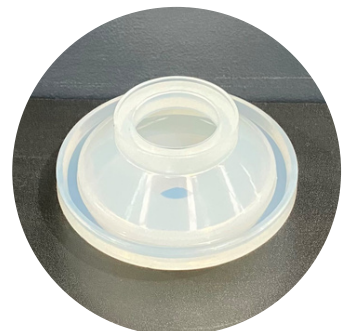
## Part No: 503-340A

Type: 4FA  
Duro: 15 Shore A  
Material: Rubber  
Colour: Red



## Part No: 503-168

Type: 1C  
Duro: 45 Shore A  
Material: Silicone  
Colour: Translucent



More Info:

[www.iconequip.com.au/spare-parts](http://www.iconequip.com.au/spare-parts)

For more info +61 3 9462 1544 or [spares@iconequip.com.au](mailto:spares@iconequip.com.au)



# Gravity Filler Diaphragms

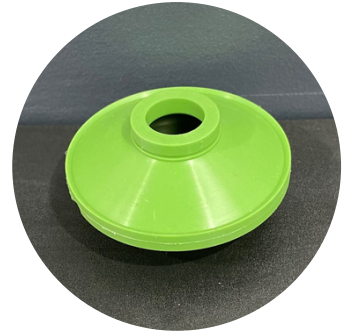
## Part No: 503-165

Type: 1C  
Duro: 45 Shore A  
Material: Rubber  
Colour: Red



## Part No: IC04

Type: N/A  
Duro: 30 Shore A  
Material: Silicone  
Colour: Green



## Part No: SR1

Type: N/A  
Duro: 35 Shore A  
Material: Silicone  
Colour: Red



## Part No: SR4

Type: N/A  
Duro: 30 Shore A  
Material: Silicone  
Colour: Green



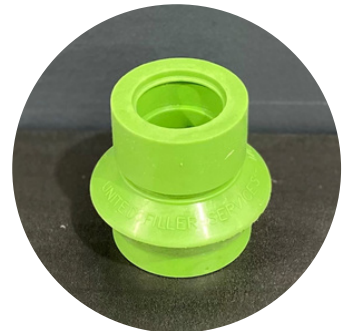
## Part No: SR6-R

Type: N/A  
Duro: 35 Shore A  
Material: Silicone  
Colour: Red



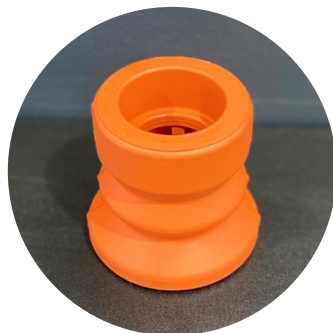
## Part No: SR6

Type: N/A  
Duro: 40 Shore A  
Material: Silicone  
Colour: Green



## Part No: 563-348

Type: CIP Bellow  
Duro: 45 Shore A  
Material: Silicone  
Colour: Red



More Info:

[www.iconequip.com.au/spare-parts](http://www.iconequip.com.au/spare-parts)

For more info +61 3 9462 1544 or [spares@iconequip.com.au](mailto:spares@iconequip.com.au)





# Gravity Filler Spacers

PART NO.	BIN	IMAGE	TYPE	COLOUR	METRIC			IMPERIAL		
					ID	OD	THK	ID	OD	THK
110-A001S	MS P4		FLAT	RED	12	50	3	.465"	2"	.125"
110-030S	MS P6		FLAT	RED	14	50	12	.565"	2"	.500"
110-012S	MS P5		FLAT	RED	14.5	50	3	.565"	2"	.125"
110-002S	MS P4		FLAT	RED	15	50	6	.575"	2"	.250"
110-059S	MS P8		BUMP	CLEAR	15	50	6	.625"	2"	.250"
110-087	MS P8		FLAT	RED	15	75	3	.625"	2.95"	.125"
SP15500S	MS P2		BUMP	RED	15	50	5	.625"	2"	.196"
110-088	MS P8		FLAT	RED	15	75	6	.625"	2.95"	.250"
110-060S	MS P8		BUMP	CLEAR	15	50	9	.625"	2"	.375"
110-034S	MS P6		FLAT	RED	17	50	3	.695"	2"	.125"
110-035S	MS P6		FLAT	RED	17	50	6	0.695	2"	.250"
110-036S	MS P6		FLAT	RED	17	50	12	.695"	2"	.500"
110-077S	MS P8		BUMP	CLEAR	20	50	6	.800"	2"	.250"
110-015S	MS P5		FLAT	RED	21	50	6	.830"	2"	.250"
110-004S	MS P4		FLAT	RED	22	50	3	.875"	2"	.125"
110-003S	MS P4		FLAT	RED	22	50	3	.830"	2"	.125"
110-027I	MS P6		FLAT	GREY	22	50	9	.830"	2"	.375"
SP22500S	MS P2		BUMP	RED	22	50	5	.866"	2"	.196"
110-016S	MS P5		FLAT	RED	22	50	6	.875"	2"	.250"
SP225010G	MS P2		BUMP	GREEN	22	50	10	.875"	2"	.393"

More Info:

[www.iconequip.com.au/spare-parts](http://www.iconequip.com.au/spare-parts)

For more info +61 3 9462 1544 or [spares@iconequip.com.au](mailto:spares@iconequip.com.au)



# Gravity Filler Spacers

PART NO.	BIN	IMAGE	TYPE	COLOUR	METRIC			IMPERIAL		
					ID	OD	THK	ID	OD	THK
SP225010R	MS P2		BUMP	RED	22	50	10	.875"	2"	.393"
SP752210	MS P3		BUMP	RED	22	75	10	.866"	2.95"	.393"
SP225015	MS P3		BUMP	GREEN	22	50	15	.875"	2"	.590"
SP227515	MS P3		BUMP	GREEN	22	75	15	.866"	2.95"	.590"
SP752210G	MS P3		BUMP	GREEN	22	75	10	.866"	2.95"	.393"
110-048R	MS P7		BUMP	RED	24	50	6	.936"	2"	.250"
110-048S	MS P7		BUMP	CLEAR	24	50	6	.936"	2"	.250"
110-057R	MS P8		BUMP	RED	24	75	6	.935"	3"	.250"
110-057S	MS P8		BUMP	CLEAR	24	75	6	.935"	3"	.250"
110-049R	MS P7		BUMP	RED	24	50	9	.935"	2"	0.375
110-049S	MS P7		BUMP	CLEAR	24	50	9	.935"	2"	0.375
110-055S	MS P7		FLAT	RED	24	50	9	.980"	2"	0.375
110-085TW	MS P8		TAPERED	RED	24	51	12	.944"	2"	.472"
110-005I	MS P4		FLAT	GREY	25	50	3	.980"	2"	.125"
110-005S	MS P5		FLAT	RED	25	50	3	.980"	2"	.125"
110-089	MS P8		FLAT	RED	25	50	3	.980"	2"	.125"
110-017I	MS P5		FLAT	GREY	25	50	6	.980"	2"	.250"
110-017S	MS P5		FLAT	RED	25	50	6	.980"	2"	.250"
110-013S	MS P5		FLAT	RED	25	76	9.5	.980"	3"	.375"
000671	MS P4		TAPERED	RED	26	51	12	1"	2"	.500"





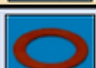




More Info:

[www.iconequip.com.au/spare-parts](http://www.iconequip.com.au/spare-parts)

For more info +61 3 9462 1544 or [spares@iconequip.com.au](mailto:spares@iconequip.com.au)



# Gravity Filler Spacers

PART NO.	BIN	IMAGE	TYPE	COLOUR	METRIC			IMPERIAL		
					ID	OD	THK	ID	OD	THK
110-086	MS Q3		BUMP	CLEAR	36	70	10	1.41"	2.75"	.393"
110-086R	MS P8		BUMP	RED	36	70	10	1.41"	2.75"	.393"
110-043I	MS P6		FLAT	GREY	36	50	6	1.41"	2"	.250"
110-043S	MS P6		FLAT	RED	36	50	6	1.41"	2"	.250"
110-053S	MS P7		FLAT	RED	41	29	1.5	1 1/8"	1 5/8"	7/128"
110-053-2	MS P7		FLAT	RED	41	29	2	1 1/8"	1 5/8"	5/64"
000268	MS P3		FLAT	RED	50	13	6	1.96"	.511"	.250"
004072	MS P3		SOLID	BLK DELRIN	50	20	21	1.96"	.787"	.826"
110-028S	MS P6		FLAT	WHITE	94	23	12.7	3.7"	1"	.500"

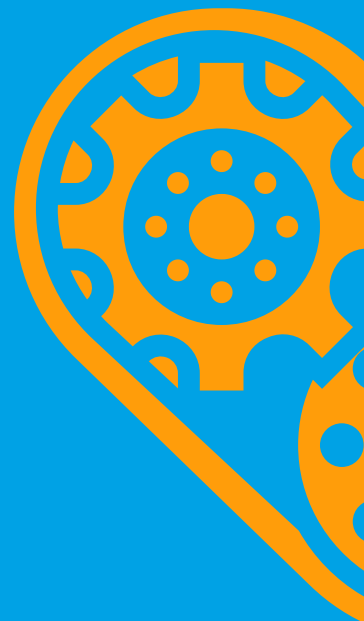
## Icon supplies spares for a variety of machines

- Rotary Fillers
- Rinsers
- Non-Contact Weigh Cell Fillers
- Bottle Unscramblers
- Gravity Fillers
- Bottle Hoppers
- Case Packers
- Palletisers
- Piston Fillers
- Replacement Bowls
- Cup Fillers
- Filling Valves
- Rotary Tables
- Bottle Change Parts
- Capping Machines
- Shrink Bundlers
- Debuggers
- Labelling Machines
- Cap Sorters
- Induction Sealers
- Conveyors
- Crate Stackers

### More Info:

[www.iconequip.com.au/spare-parts](http://www.iconequip.com.au/spare-parts)

For more info +61 3 9462 1544 or [spares@iconequip.com.au](mailto:spares@iconequip.com.au)





## Common Parts



**Part No:**

503-173

**Description:**

VALVE SLEEVE  
1.125" X 2"



**Part No:**

745-702

**Description:**

VALVE SLEEVE  
1.125" X 2"



**Part No:**

503-117

**Description:**

VALVE CLOSE  
SPRING (6LBS)



**Part No:**

626-108-1

**Description:**

CIRCLIP

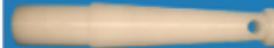


**Part No:**

511-120

**Description:**

U JOINT, STAINLESS  
STEEL



**Part No:**

503-408

**Description:**

VALVE SLEEVE  
REMOVAL TOOL



**Part No:**

26-9

**Description:**

HAIR PIN CLIP



**Part No:**

503-127

**Description:**

FLAT WIRE CLIP  
(1/4")



**Part No:**

503-132

**Description:**

ROUND WIRE CLIP  
(1/8")



**Part No:**

503-105

**Description:**

FLAT WIRE CLIP  
(1/4")

**More Info:**

[www.iconequip.com.au/spare-parts](http://www.iconequip.com.au/spare-parts)

For more info +61 3 9462 1544 or [spares@iconequip.com.au](mailto:spares@iconequip.com.au)



## Common Parts



**Part No:**

768-324

**Description:**  
LIFTER BUSH



**Part No:**

510-132

**Description:**  
LIFTER HOUSING  
BUSHING



**Part No:**

510-339

**Description:**  
CAM ROLLERS



**Part No:**

593-359

**Description:**  
CAM ROLLER  
SHAFT



**Part No:**

752-122

**Description:**  
700 SERIES  
MAIN DRIVE GEAR



**Part No:**

616-135

**Description:**  
THRUST BEARING



**Part No:**

593-146

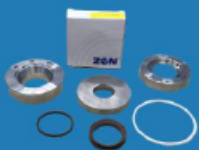
**Description:**  
AUTO RAISING  
BRONZE NUT



**Part No:**

510-121

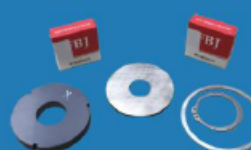
**Description:**  
BOWL/CAPPER  
LOWER BUSHING



**Part No:**

MCC30-19-CRBK

**Description:**  
MCC30-19 REBUILD  
COMPLETE KIT



**Part No:**

587-5-K

**Description:**  
587-5 REBUILD KIT

**More Info:**

[www.iconequip.com.au/spare-parts](http://www.iconequip.com.au/spare-parts)

For more info +61 3 9462 1544 or [spares@iconequip.com.au](mailto:spares@iconequip.com.au)





## Common Parts



**Part No:**  
MCC35-19  
**Description:**  
HYSTERESIS  
CAPPING CLUTCH



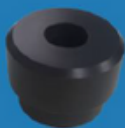
**Part No:**  
587-238  
**Description:**  
COLLET HUB



**Part No:**  
587-127  
**Description:**  
CAPPER HEAD PIN  
REMOVAL TOOL



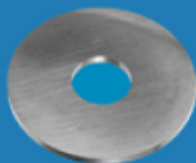
**Part No:**  
587-110  
**Description:**  
CAPPER HEAD PIN



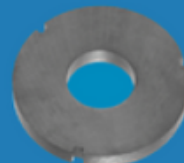
**Part No:**  
587-288  
**Description:**  
COLLET STOP  
38MM FLAT



**Part No:**  
616-1901  
**Description:**  
COLLET STOP  
SPRING LIGHT (7LB)



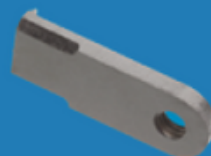
**Part No:**  
587-111  
**Description:**  
CAPPER HEAD DISK



**Part No:**  
587-107  
**Description:**  
6 POLE MAGNET



**Part No:**  
745-369  
**Description:**  
NECK KNIFE INSERT



**Part No:**  
655-279  
**Description:**  
KNIFE INSERT NVAC

**More Info:**

[www.iconequip.com.au/spare-parts](http://www.iconequip.com.au/spare-parts)

For more info +61 3 9462 1544 or [spares@iconequip.com.au](mailto:spares@iconequip.com.au)



## Common Parts



**Part No:**

655-2951

**Description:**

STATIONARY JAW  
SUPPORT



**Part No:**

5015-1

**Description:**

JAW TENSION  
SPRING



**Part No:**

752-130

**Description:**

ROD CAM  
FOLLOWER



**Part No:**

O6P301

**Description:**

PHOTOELECTRIC  
SENSOR



**Part No:**

616-116-2

**Description:**

TRI CLOVER LEVEL  
CONTROLLER



**Part No:**

616-116-3

**Description:**

TRI CLOVER FLOAT



**Part No:**

626-203

**Description:**

PRODUCT VALVE 2"  
c/w CONTROL HEAD



**Part No:**

626-208

**Description:**

EPV LEVEL VALVE/  
TRANSMITTER



**Part No:**

626-116-K

**Description:**

VALVE SERVICE  
REPAIR KIT 771 TYPE



**Part No:**

001501

**Description:**

2" TRI CLOVER  
VALVE

**More Info:**

[www.iconequip.com.au/spare-parts](http://www.iconequip.com.au/spare-parts)

For more info +61 3 9462 1544 or [spares@iconequip.com.au](mailto:spares@iconequip.com.au)



## Common Parts



**Part No:**  
MADE TO ORDER  
**Description:**  
CHANGE PARTS



**Part No:**  
MADE TO ORDER  
**Description:**  
SCROLL



**Part No:**  
MADE TO ORDER  
**Description:**  
BOWL SEAL



**Part No:**  
MADE TO ORDER  
**Description:**  
BOWL BEARING



**Part No:**  
MADE TO ORDER  
**Description:**  
VENT TUBE



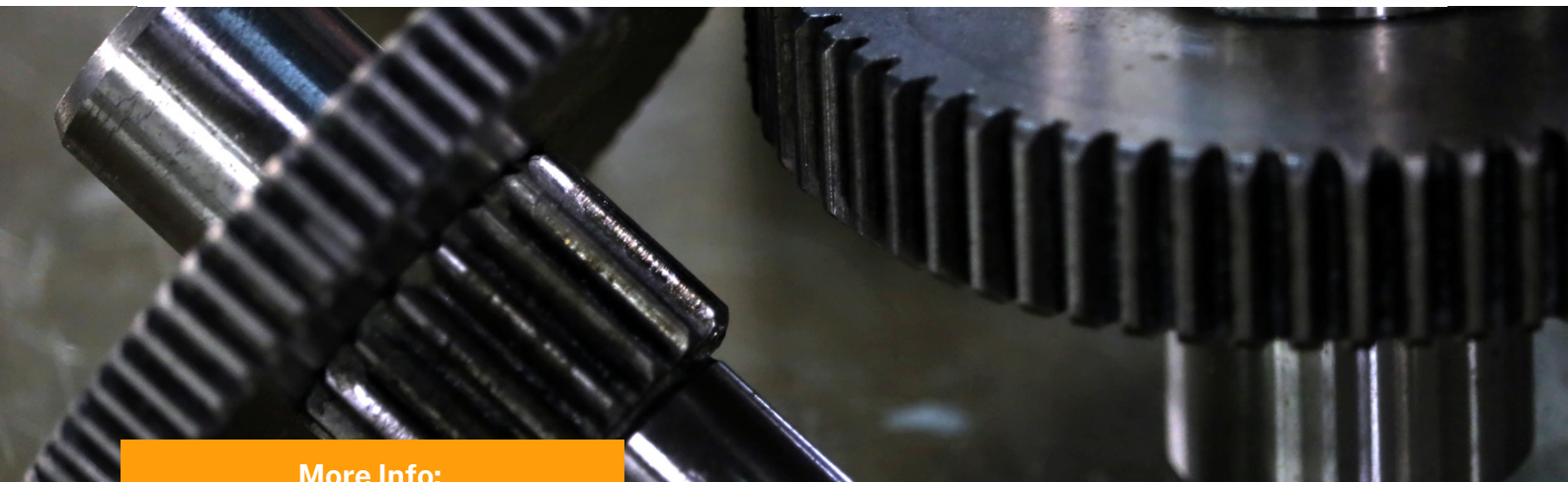
**Part No:**  
MADE TO ORDER  
**Description:**  
VALVE ASSEMBLY



**Part No:**  
MADE TO ORDER  
**Description:**  
CAP DISPENSER



**Part No:**  
MADE TO ORDER  
**Description:**  
CAP CHUTE



**More Info:**

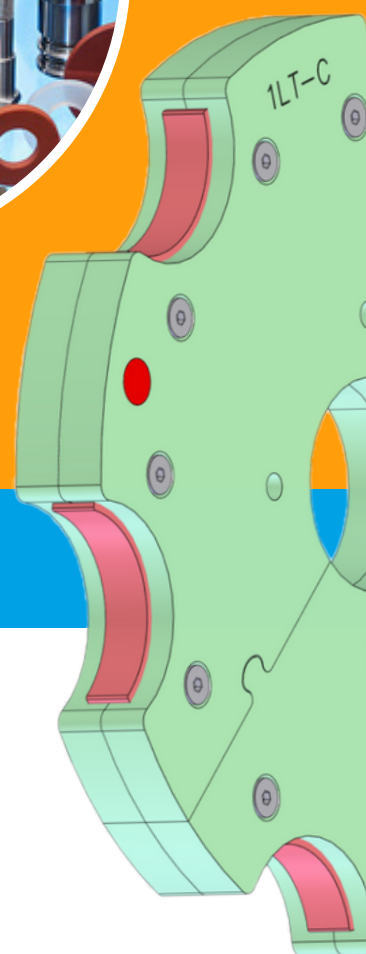
[www.iconequip.com.au/spare-parts](http://www.iconequip.com.au/spare-parts)

For more info +61 3 9462 1544 or [spares@iconequip.com.au](mailto:spares@iconequip.com.au)





Icon Equipment supplies the highest quality spare parts for a range of filling machines including Fogg, Federal, Graham Enoch, Cherry Burrell, UDEC & UFS. We also support all supplied equipment including supporting all equipment supplied by our key partners. The information provided in this Spare Parts Catalogue is a sample reference for some of the most commonly used spare parts. Contact our Spare Parts Team for further detailed information.



## CHECK US OUT

[WWW.ICONEQUIP.COM.AU](http://WWW.ICONEQUIP.COM.AU)

More Info:

[www.iconequip.com.au/spare-parts](http://www.iconequip.com.au/spare-parts)

For more info +61 3 9462 1544 or [spares@iconequip.com.au](mailto:spares@iconequip.com.au)